



CROSS COUNTY MALL

Mattoon, Illinois



HIGHLIGHTS

- **AVAILABLE:** Anchor space (54,232 SF), 2,610 SF on the front of the mall with a new exterior storefront located adjacent to the mall's main entrance, 6,502 SF restaurant space, and interior mall space ranging from 1,006 SF up to 9,135 SF at the Cross County Mall with Rural King, Marshalls, Dunham's Sports, JOANN, and more. The Cross County Mall is the primary shopping destination in the Charleston-Mattoon Micropolitan Statistical Area, which has a trade area population of 101,319.
- Emerald Acres Sports Connection, a new \$100 million indoor and outdoor sports complex (currently under construction and opening in 2024/2025), is located across the street and is projected to draw 580,000 visitors and generate \$23.8 million in direct spending and 59,000 hotel room nights on an annual basis.
- This market and Rural King draw from up to 30 miles in all directions and will expand its draw as far as to cities such as Chicago, Indianapolis, and St. Louis with the opening of Emerald Acres Sports Connection (leasing also by Goodman Real Estate Services Group).

DEMOGRAPHICS

POPULATION	10 MILE	15 MILE	20 MILE	30 MILE
2028 Projection	48,496	62,437	84,417	146,970
2023 Estimate	47,563	61,475	83,345	146,561
INCOME	10 MILE	15 MILE	20 MILE	30 MILE
2023 Average	\$68,682	\$70,672	\$71,657	\$74,436
2023 Median	\$48,404	\$51,606	\$54,261	\$56,817
DAYTIME POPULATION	10 MILE	15 MILE	20 MILE	30 MILE
2023 Employees	25,295	28,927	38,195	68,775

LEASING INFORMATION

www.goodmanrealestate.com
216.381.8200

CLEVELAND

THE OFFICES OF LEGACY VILLAGE
25333 CEDAR ROAD, SUITE 305
CLEVELAND, OH 44124

COLUMBUS

389 E. LIVINGSTON AVENUE
COLUMBUS, OHIO 43215

RANDY GOODMAN
randy@goodmanrealestate.com

ALEX JUSTICE
alex@goodmanrealestate.com

MAGGIE JONES
maggie@goodmanrealestate.com

in conjunction with State
of Illinois licensed broker



CENTURY 21 KIMA PROPERTIES
1600 Broadway Avenue
Mattoon, IL 61938



LEASING INFORMATION

www.goodmanrealestate.com

216.381.8200

RANDY GOODMAN
randy@goodmanrealestate.com
ALEX JUSTICE
alex@goodmanrealestate.com
MAGGIE JONES
maggie@goodmanrealestate.com

in conjunction with State
of Illinois licensed broker
21
CENTURY 21 KIMA PROPERTIES
1600 Broadway Avenue
Mattoon, IL 61938

CROSS COUNTY MALL

Mattoon, Illinois

CROSS COUNTY MALL

RURAL KING
EST'D. 1960
AMERICA'S FARM & HOME STORE
Marshall's **JOANN**
Dunham's SPORTS

43 AC AVAILABLE

18,237 VPD (23)

60 AC AVAILABLE

CHARLESTON AVE

INTERSTATE 57

ILLINOIS 16

19,902 VPD (23)

THE SHOPS AT EMERALD ACRES SPORTS CONNECTION

bealls **HOME CENTRIC** **ULTA**
Michaels **FIVE BELOW**
FAMOUS FOOTWEAR **Chick-fil-A** **PANDA EXPRESS**

EMERALD ACRES

\$100M indoor & outdoor sports & shopping complex

140,000 SF field house and 12 multi-purpose turf fields that can host 20 junior baseball/softball fields, 4 varsity baseball fields, and 8 soccer fields

130,000 SF shopping center anchored by Bealls Home Centric, Michaels, Ulta, Five Below, and Famous Footwear, plus restaurants Chick-fil-A, Chipotle, and Panda Express opening in 2024/2025 (leasing by Goodman Real Estate Services Group)

Logos on map include: Burger King, CVS Pharmacy, Usbank, Papa Murphy's, Family Video, Sherwin Williams, CarX, bp, Clarion Pointe, Best Western, Comfort Suites, Fujiyama, Subway, Wendys, Walmart Supercenter, Home Depot, Planet Fitness, Big Lots, Walgreens, Denny's, Slumberland, PetSmart, Harbor Freight, Aldi, Cato, Dollar Tree, Shoe Sensation, Hibbett Sports, RentX, AT&T, Starbucks, Dunkin', Buffalo Wild Wings, Taco Bell, McDonald's, Freddy's, Stadium Grill, Great Clips, Express, Aspen Dental, BlueCross BlueShield, Hilton Garden Inn, Amc Classic, HSHS Medical Group.

THE INFORMATION ABOVE HAS BEEN OBTAINED FROM SOURCES BELIEVED TO BE RELIABLE. GOODMAN REAL ESTATE SERVICES GROUP LLC AND ITS AGENTS, ASSOCIATES, AND EMPLOYEES MAKE NO GUARANTEE, WARRANTY OR REPRESENTATION ABOUT IT. ALL IMAGES CONTAINED HEREIN ARE THE PROPERTY OF GOODMAN REAL ESTATE SERVICES GROUP LLC AND SHALL NOT BE DUPLICATED OR REPRODUCED WITHOUT EXPRESS WRITTEN CONSENT OF GOODMAN REAL ESTATE SERVICES GROUP LLC. YOU ACKNOWLEDGE THAT, AS REQUIRED BY THE STATE OF OHIO, YOU HAVE RECEIVED THE CONSUMER GUIDE TO AGENCY RELATIONSHIPS.



LEASING INFORMATION

www.goodmanrealestate.com

216.381.8200

RANDY GOODMAN
randy@goodmanrealestate.com
ALEX JUSTICE
alex@goodmanrealestate.com
MAGGIE JONES
maggie@goodmanrealestate.com

— in conjunction with State
of Illinois licensed broker —
21
CENTURY 21 KIMA PROPERTIES
1600 Broadway Avenue
Mattoon, IL 61938

CROSS COUNTY MALL

Mattoon, Illinois



APR 24



LEASING INFORMATION

www.goodmanrealestate.com

216.381.8200

RANDY GOODMAN
randy@goodmanrealestate.com
ALEX JUSTICE
alex@goodmanrealestate.com
MAGGIE JONES
maggie@goodmanrealestate.com

in conjunction with State of Illinois licensed broker



CENTURY 21 KIMA PROPERTIES
1600 Broadway Avenue
Mattoon, IL 61938

CROSS COUNTY MALL

Mattoon, Illinois



\$100M indoor & outdoor sports & shopping complex
140,000 SF field house and 12 multi-purpose turf fields that can host 20 junior baseball/softball fields, 4 varsity baseball fields, and 8 soccer fields
130,000 SF shopping center anchored by Bealls Home Centric, Michaels, Ulta, Five Below, and Famous Footwear, plus restaurants Chick-fil-A, Chipotle, and Panda Express opening in 2024/2025 (leasing by Goodman Real Estate Services Group)



ANAMET Electrical, Inc.
ANACONDA SEALTITE

Walmart Supercenter

18,237 VPD (23)
CHARLESTON AVE

BROADWAY AVE



THE INFORMATION ABOVE HAS BEEN OBTAINED FROM SOURCES BELIEVED TO BE RELIABLE. GOODMAN REAL ESTATE SERVICES GROUP LLC AND ITS AGENTS, ASSOCIATES, AND EMPLOYEES MAKE NO GUARANTEE, WARRANTY OR REPRESENTATION ABOUT IT. ALL IMAGES CONTAINED HEREIN ARE THE PROPERTY OF GOODMAN REAL ESTATE SERVICES GROUP LLC AND SHALL NOT BE DUPLICATED OR REPRODUCED WITHOUT EXPRESS WRITTEN CONSENT OF GOODMAN REAL ESTATE SERVICES GROUP LLC. YOU ACKNOWLEDGE THAT, AS REQUIRED BY THE STATE OF OHIO, YOU HAVE RECEIVED THE CONSUMER GUIDE TO AGENCY RELATIONSHIPS.



LEASING INFORMATION

www.goodmanrealestate.com

216.381.8200

RANDY GOODMAN
randy@goodmanrealestate.com
ALEX JUSTICE
alex@goodmanrealestate.com
MAGGIE JONES
maggie@goodmanrealestate.com

— in conjunction with State
of Illinois licensed broker —

CENTURY 21 KIMA PROPERTIES
1600 Broadway Avenue
Mattoon, IL 61938

CROSS COUNTY MALL

Mattoon, Illinois



**2,610 SF AVAILABLE
WITH PROPOSED
NEW STOREFRONT**





CROSS COUNTY MALL

Mattoon, Illinois

LEASING INFORMATION

P 216.381.8200
F 216.381.8211

WWW.GOODMANREALESTATE.COM

CLEVELAND

THE OFFICES OF LEGACY VILLAGE
25333 CEDAR ROAD, SUITE 305
CLEVELAND, OH 44124

COLUMBUS

389 E. LIVINGSTON AVENUE
COLUMBUS, OHIO 43215

RANDY GOODMAN

randy@goodmanrealestate.com

ALEX JUSTICE

alex@goodmanrealestate.com

MAGGIE JONES

maggie@goodmanrealestate.com

— in conjunction with State of Illinois licensed broker —

CENTURY 21 KIMA PROPERTIES

KEY

- AVAILABLE
- LEASED
- MALL OFFICES
- PUBLIC RESTROOMS

UNIT	TENANT	SIZE (SQ. FT.)
1	Dunham's Sports	49,250
2	Available	5,353
3	Available	3,129
4	Available	4,629
5	Available	1,980
6	Available	2,526
7	Glik's	4,467
8	Entrepreneurship and Small Business Center Supported by Google.org	7,000
9	Journal Gazette-Times Courier	3,369
9a	Available	630
10	Available	54,232
11	Available	2,655
12	Available	1,996
13	Available	2,092
14	Available	1,993
15	Rural King	74,308
17	Available	1,006
18	C&C Kettle Corn	968
19	Claire's Boutique	1,006
20	Available	1,422
21	Pro Nails	1,430
22	Marshalls	22,500
25	Available	6,502
30	Available	4,694
32	JOANN	13,488
33	Bath & Body Works	2,850
34	Maurice's	6,551
35	Shoe Department	7,188
36	Available	2,610
A	Ground Lease/Build-to-suit	1.3 AC
B	Oil Change (coming soon)	0.5 AC
C	Alamo Steakhouse	
D	Ground Lease/Build-to-suit/ Inline Space for Lease	5,400 SF on 0.5 AC
E	Available	1,806 SF on 1.6 AC



Owned by: RK REAL ESTATE & DEVELOPMENT



LEASING INFORMATION

www.goodmanrealestate.com

216.381.8200

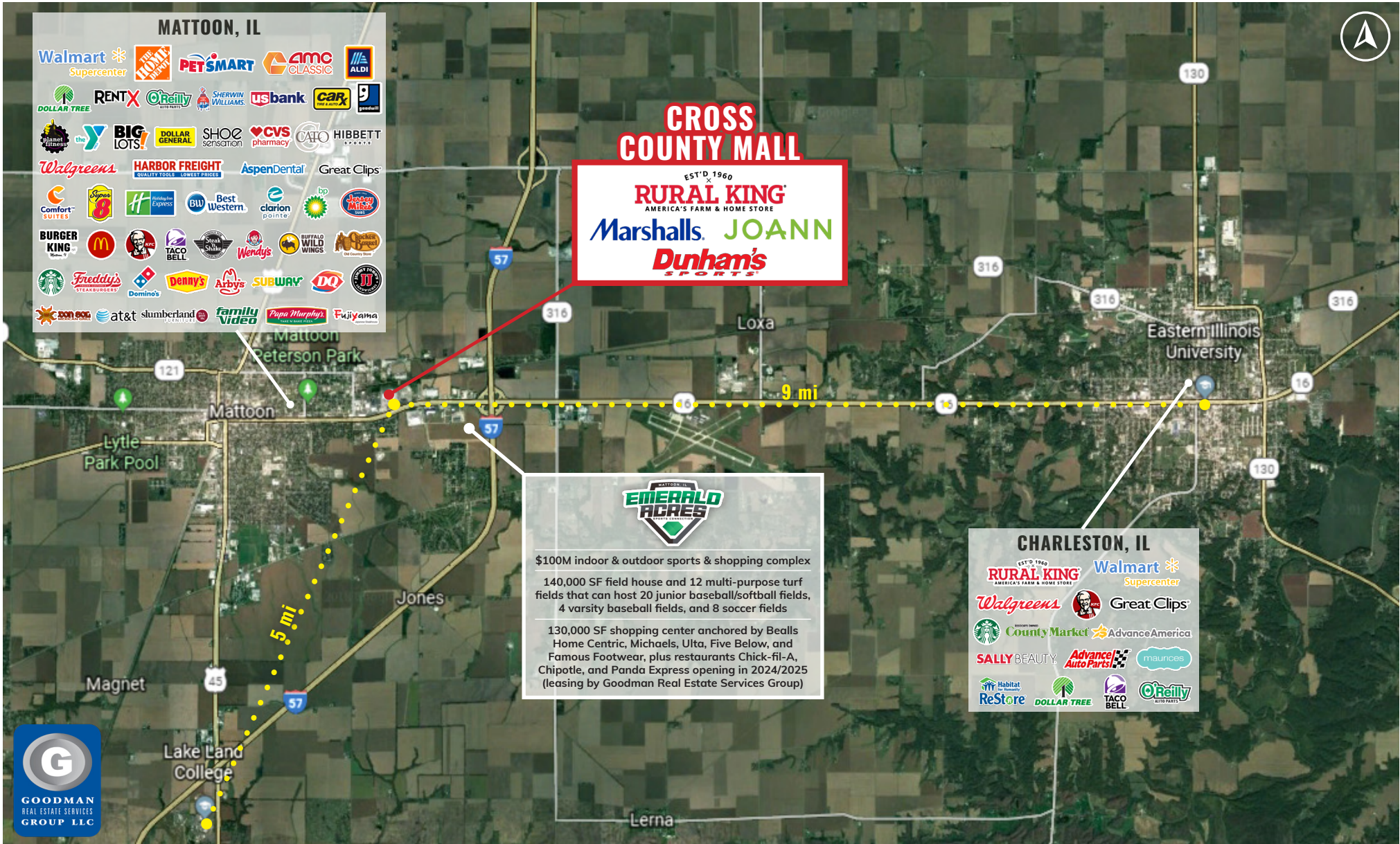
RANDY GOODMAN
randy@goodmanrealestate.com
ALEX JUSTICE
alex@goodmanrealestate.com
MAGGIE JONES
maggie@goodmanrealestate.com

— in conjunction with State
of Illinois licensed broker —
21
CENTURY 21 KIMA PROPERTIES
1600 Broadway Avenue
Mattoon, IL 61938

CROSS COUNTY MALL

Mattoon, Illinois

MICROPOLITAN STATISTICAL AREA



THE INFORMATION ABOVE HAS BEEN OBTAINED FROM SOURCES BELIEVED TO BE RELIABLE. GOODMAN REAL ESTATE SERVICES GROUP LLC AND ITS AGENTS, ASSOCIATES, AND EMPLOYEES MAKE NO GUARANTEE, WARRANTY OR REPRESENTATION ABOUT IT. ALL IMAGES CONTAINED HEREIN ARE THE PROPERTY OF GOODMAN REAL ESTATE SERVICES GROUP LLC AND SHALL NOT BE DUPLICATED OR REPRODUCED WITHOUT EXPRESS WRITTEN CONSENT OF GOODMAN REAL ESTATE SERVICES GROUP LLC. YOU ACKNOWLEDGE THAT, AS REQUIRED BY THE STATE OF OHIO, YOU HAVE RECEIVED THE CONSUMER GUIDE TO AGENCY RELATIONSHIPS.