



# ALBERTVILLE COMMONS A NEW RURAL KING DEVELOPMENT

Albertville, Alabama

BROKER:  
**BANG**  
REALTY

REFERRING BROKER:



## HIGHLIGHTS

- Join new Rural King in a new development located on US Route 431 where traffic counts in front of the site reach 32,518 vehicles daily
- Albertville is home to Sand Mountain Park & Amphitheater, a 130-acre park that features premier spaces for sports and recreation use (opened in 2020)
- Over 170,000 people within a 20-mile radius
- Proposed pylon/monument sign panel(s) available at the primary, full access point from US Route 431
- AVAILABLE:
  - Outlots: 0.637 AC | 0.69 AC | 1.0 AC
  - Buildable Land: Up to 7.8 AC

## DEMOGRAPHICS

POPULATION	5 MILE	10 MILE	15 MILE	20 MILE	30 MILE
2027 Projection	38,898	72,868	103,146	178,583	350,610
2022 Estimate	37,631	70,595	100,165	174,513	343,208
INCOME	5 MILE	10 MILE	15 MILE	20 MILE	30 MILE
2022 Average	\$57,961	\$60,090	\$61,076	\$59,757	\$63,168
2022 Median	\$43,283	\$44,778	\$45,265	\$43,727	\$46,694
DAYTIME POPULATION	5 MILE	10 MILE	15 MILE	20 MILE	30 MILE
2022 Employees	19,201	24,712	32,631	57,793	104,984

## LEASING INFORMATION

www.bangrealty.com  
513.898.1551  
www.goodmanrealestate.com  
216.381.8200



IN ASSOCIATION WITH  
**BRIAN BROCKMAN**  
License #: 119315  
Bang Realty-Alabama Inc  
bor@bangrealty.com  
513-898-1551



REFERRING BROKERS  
**ALEX JUSTICE**  
alex@goodmanrealestate.com

**CLEVELAND**  
25333 CEDAR ROAD, SUITE 305  
CLEVELAND, OH 44124

**MAGGIE JONES**  
maggie@goodmanrealestate.com

**COLUMBUS**  
389 E. LIVINGSTON AVENUE  
COLUMBUS, OHIO 43215





## LEASING INFORMATION

www.bangrealty.com  
513.898.1551  
www.goodmanrealestate.com  
216.381.8200

STATE OF ALABAMA LICENSED BROKER (LISC# 119315)

**BRIAN BROCKMAN, BANG REALTY-ALABAMA INC**  
bor@bangrealty.com

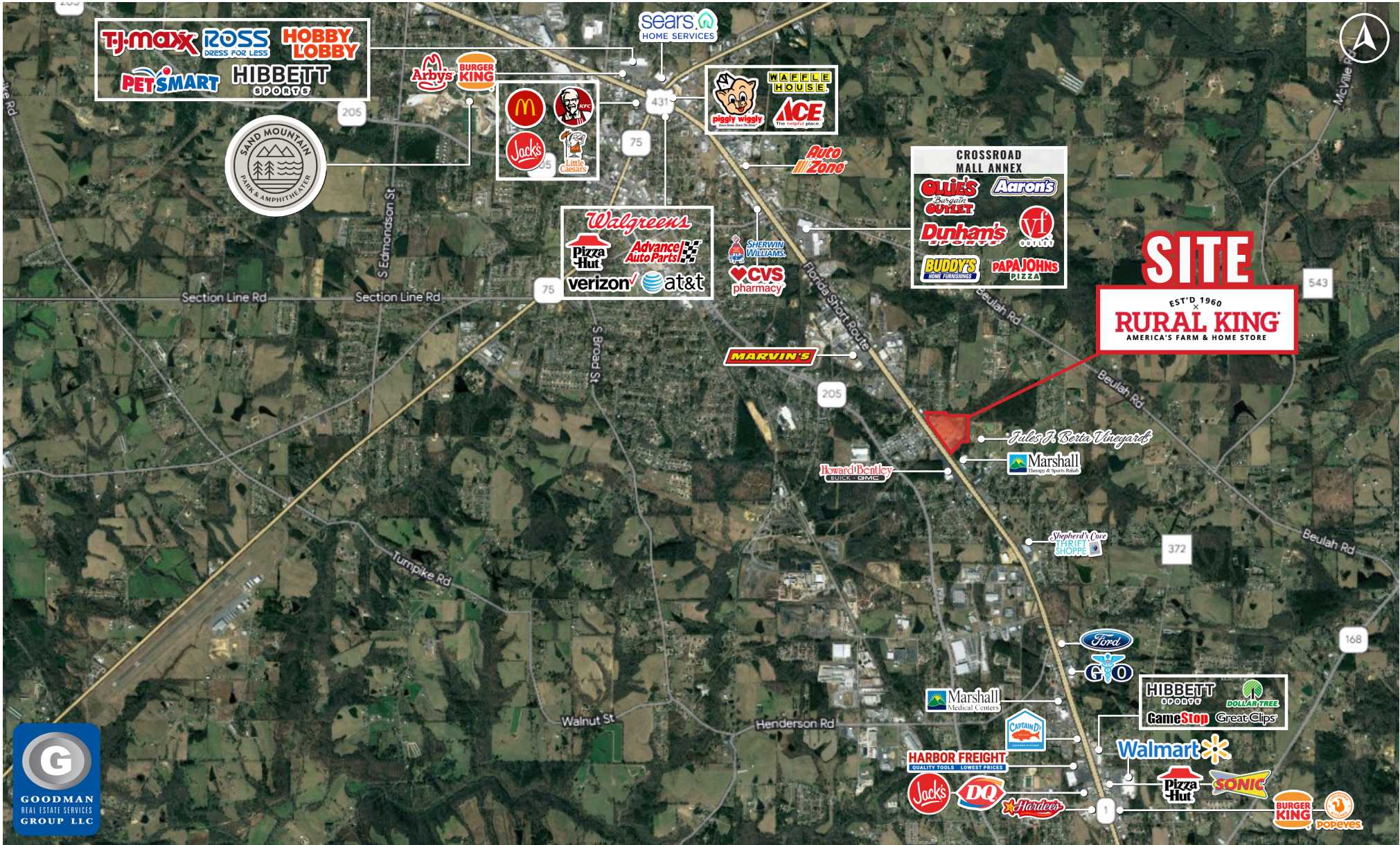
REFERRING BROKERS

**ALEX JUSTICE**  
alex@goodmanrealestate.com

**MAGGIE JONES**  
maggie@goodmanrealestate.com

# ALBERTVILLE COMMONS A NEW RURAL KING DEVELOPMENT

Albertville, Alabama







## LEASING INFORMATION

www.bangrealty.com  
513.898.1551  
www.goodmanrealestate.com  
216.381.8200

STATE OF ALABAMA LICENSED BROKER (LISC# 119315)

**BRIAN BROCKMAN, BANG REALTY-ALABAMA INC**  
bor@bangrealty.com

REFERRING BROKERS

**ALEX JUSTICE**  
alex@goodmanrealestate.com  
**MAGGIE JONES**  
maggie@goodmanrealestate.com

# ALBERTVILLE COMMONS A NEW RURAL KING DEVELOPMENT

## Albertville, Alabama

## POTENTIAL DEVELOPMENT OPTION 1



ALBERTVILLE, AL



## LEASING INFORMATION

www.bangrealty.com  
513.898.1551  
www.goodmanrealestate.com  
216.381.8200

STATE OF ALABAMA LICENSED BROKER (LISC# 119315)

**BRIAN BROCKMAN, BANG REALTY-ALABAMA INC**  
bor@bangrealty.com

REFERRING BROKERS

**ALEX JUSTICE**  
alex@goodmanrealestate.com  
**MAGGIE JONES**  
maggie@goodmanrealestate.com

# ALBERTVILLE COMMONS A NEW RURAL KING DEVELOPMENT

## Albertville, Alabama

## POTENTIAL DEVELOPMENT OPTION 2

